

## 1. Purpose

This document provides a simple summary of the Governance and Income of the Sustainable Eel Group (SEG) in 2021.

## 2. Governance

### 2.1 Registration

SEG is registered in the European Union and in the United Kingdom.

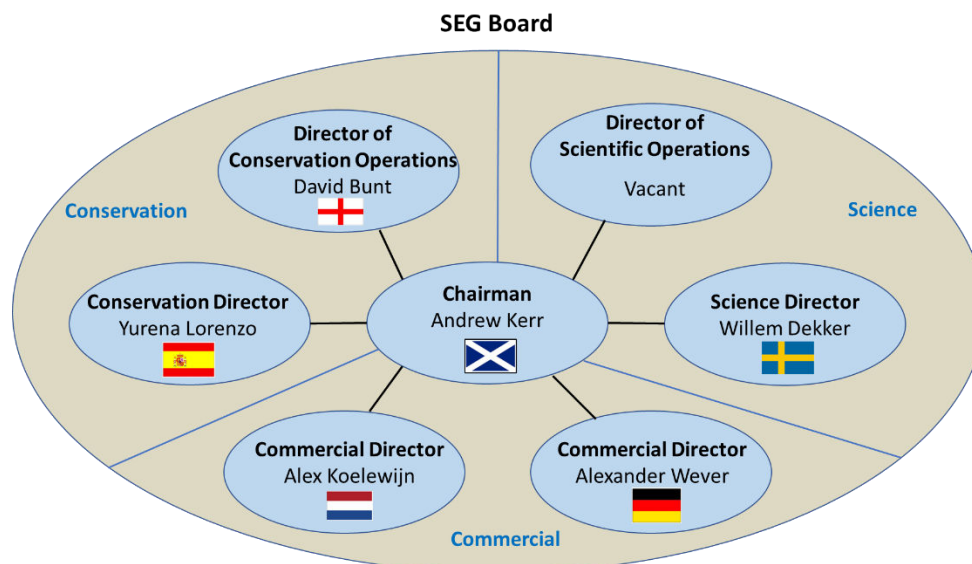
SEG is registered in the EU in **Belgium** as an ASBL, a non-profit organisation with the name 'Sustainable Eel Group'; registration: 0698.691.691 address: c/o Wetlands International European Association, Rue de Trèves 59-61, B-1040, Brussels, Belgium.

In the **United Kingdom** SEG is registered as a 'Not for Profit Limited Company' under the name 'Sustainable Eel Development Limited'; company registration: 07159843, address: Guildhall Chambers, The Square, Axbridge, Somerset, UK, BS26 2AP.

### 2.2 Corporate structure

Under the ASBL constitution, SEG consists of Members, with voting rights, and Adhering Members: SEG Community Members - people and organisations who have an interest in SEG and its business who are consulted as stakeholders but have no voting rights. The SEG Board consists of six Directors who are 'Members'. In that team there are two people with expertise and representing each of the three sectors: Science, Conservation and Commercial.

Fig. 1 below shows the structure, membership and nationalities of the SEG Board.



### 3. Income

SEG receives income from the following sources:

**Restricted** (must be spent on specific / contract activities), i.e.:-

- Grants
- Contracts

**Unrestricted** (can be spent on activities according to the decision of the SEG Board)

- Eel Stewardship Funds
- Donations

Fig. 2. below is an analysis of income in the calendar year 1 January – 31 December 2021:-

SEG Income 2021 EUR				
Restricted		Unrestricted		Total
Grants		Donations	Eel Stewardship Funds	
<b>18,466.78</b>		<b>20,619.20</b>	<b>202,228.00</b>	<b>241,313.98</b>
%	7.65%	8.54%	83.80%	100.00%

### 4. Enquiries

For any enquiries regarding this, or anything else please email us at: [info@sustainableeelgroup.org](mailto:info@sustainableeelgroup.org).

### 5. Review

This summary will be reproduced annually as part of our annual reporting process.

Copyright:



Sustainable  
Eel Group

For further information please see:

[www.sustainableeelgroup.org](http://www.sustainableeelgroup.org)

Or contact us at:

[info@sustainableeelgroup.org](mailto:info@sustainableeelgroup.org)

Registered address:

c/o Wetlands International European Association  
Rue de Trèves 59-61, B-1040, Brussels, Belgium