



Sustainable
Eel Group

Annual General Meeting

Meeting Etiquette

- 1. Please remain on Mute to reduce background noise**
- 2. Use of your Video is optional, but preferred**
- 3. Use the 'Raise Hand' icon if you'd like to speak**
- 4. OK to record?**

Annual General Meeting

Agenda

- 1. Apologies**
- 2. Minutes of last meeting**
- 3. Chairman's Report**
 - a. Impacts Report
 - b. SEG Standard and ISEAL
 - c. #EelDeal2030
 - d. Events 2022
- 4. Financial Report**
- 5. Any other business**

Sustainable
Eel Group

Annual General Meeting

Agenda

1. Apologies

2. Minutes of last meeting



Sustainable
Eel Group

Annual General Meeting

Agenda

3. Chairman's Report

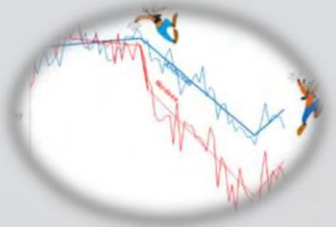
a. Impacts Report



Sustainable
Eel Group



SEG Leadership Team



***“In 2020 SEG’s Eel Sustainability Claims,
PPP - People Profit Planet - will mature”***



‘Triple Bottom Line’ 2002 John Elkington



Sustainability and Eel



**Eel Reg
1100/2007**

Next steps – better implementation

Focus on non-fisheries factors

Continue addressing fisheries impacts

Make use of good practices and projects

Reinforce control and enforcement

Strengthen transboundary cooperation

Improve connectivity RBMPs and EMPs

Increase EU funds uptake

Improve efficiency of reporting

Consider revising EMPs



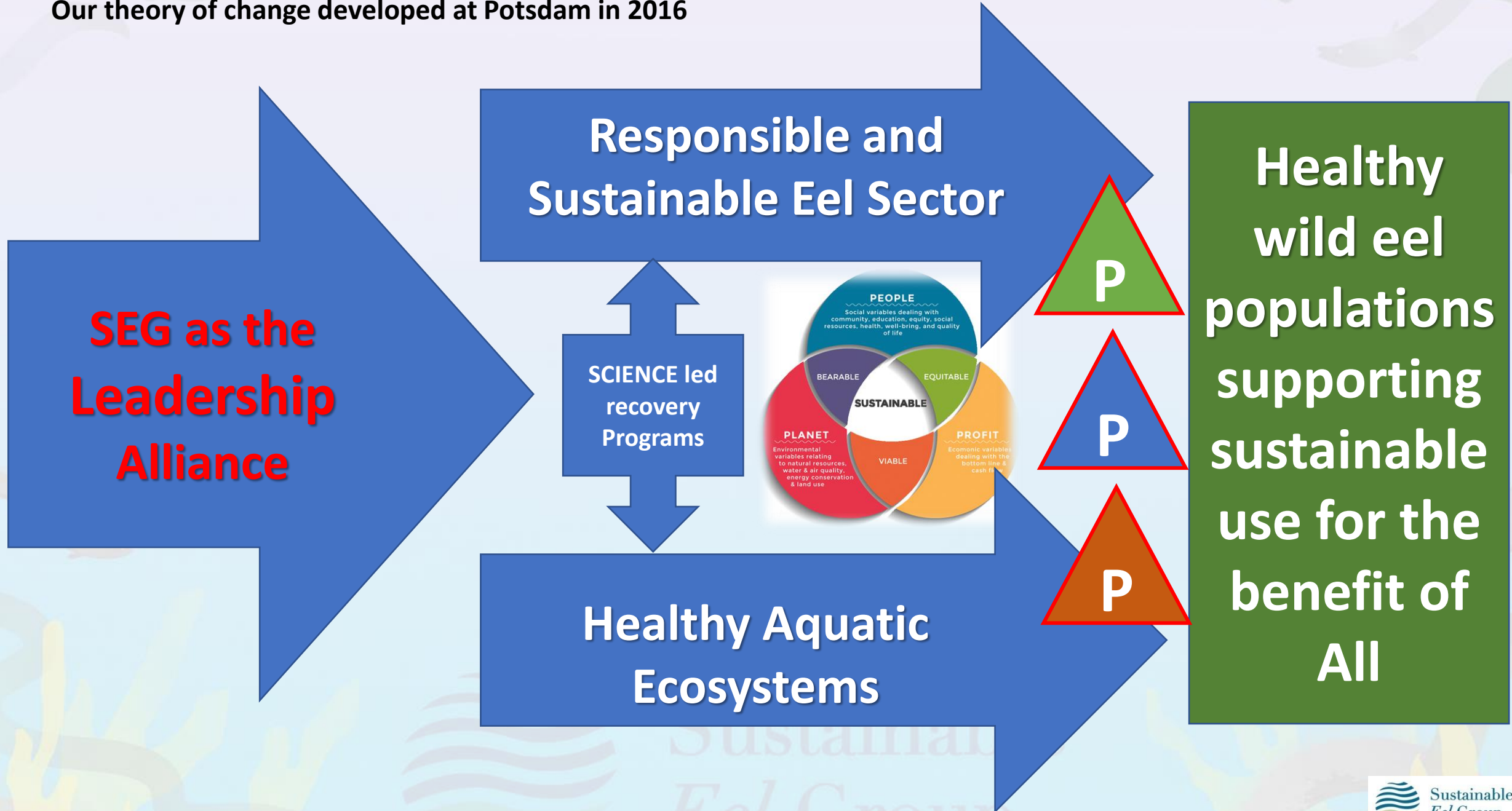
**The SEG
Standard**

***SEG Leading a multi decadal Recovery through
Protection and Sustainable use***



Eel Group

Our theory of change developed at Potsdam in 2016

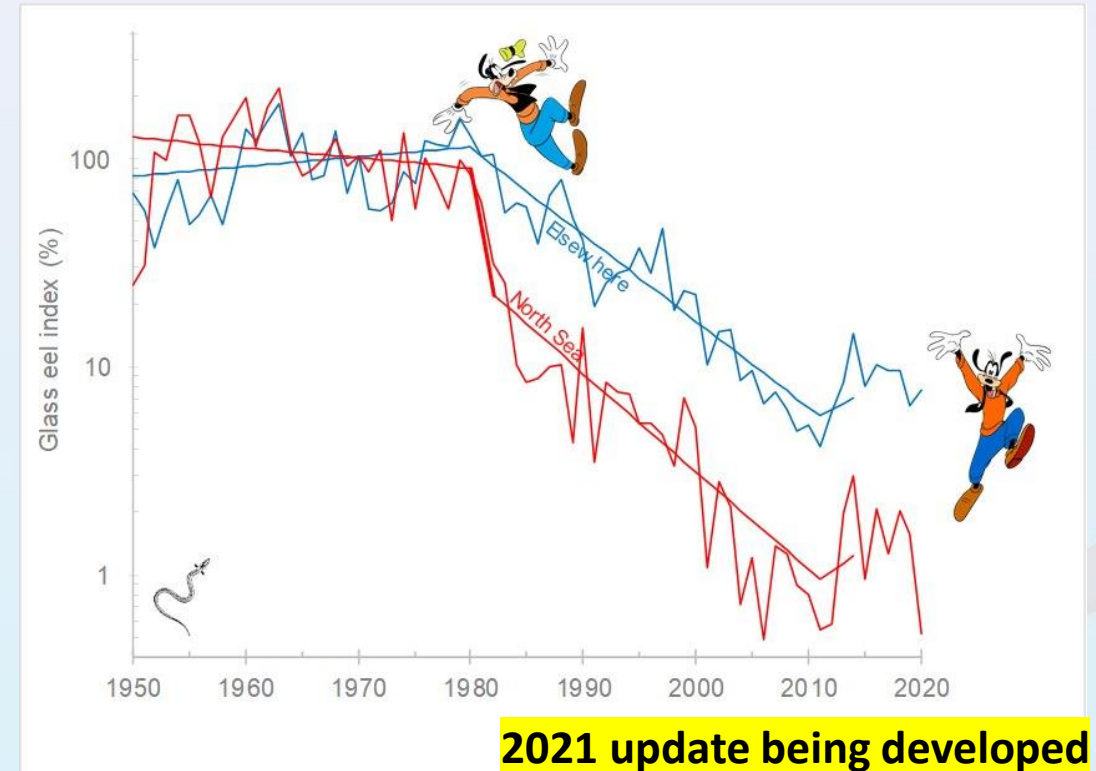
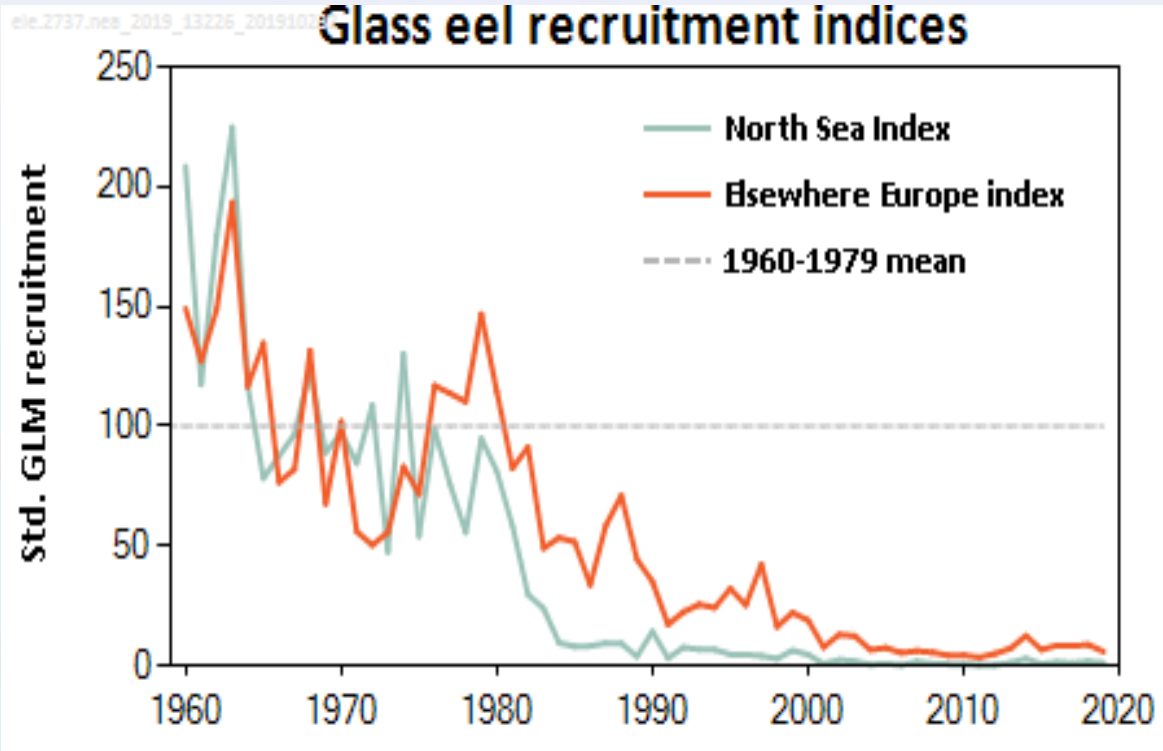


W Dekker. November 2020

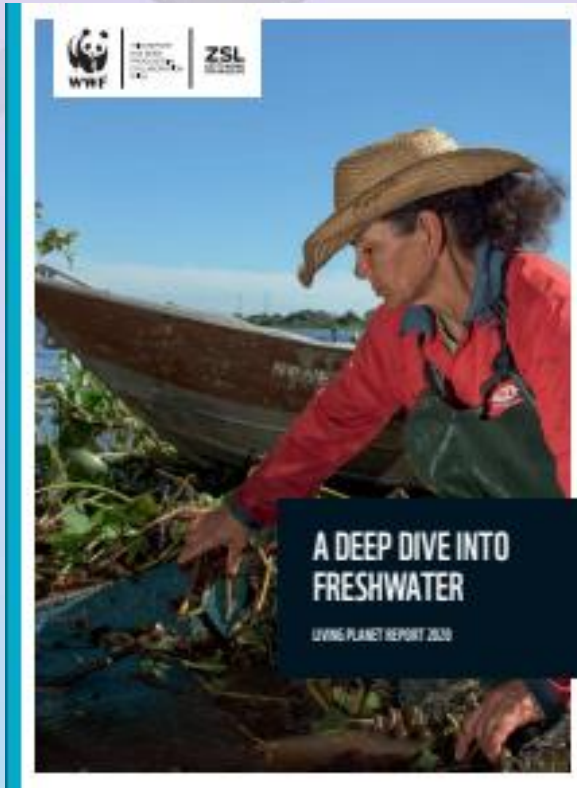
*“Recruitment has stopped decreasing in 2011, and remains very low since.
The implementation of the Eel Regulation can be improved!”*

**10 year
view**

Glass eel recruitment indices

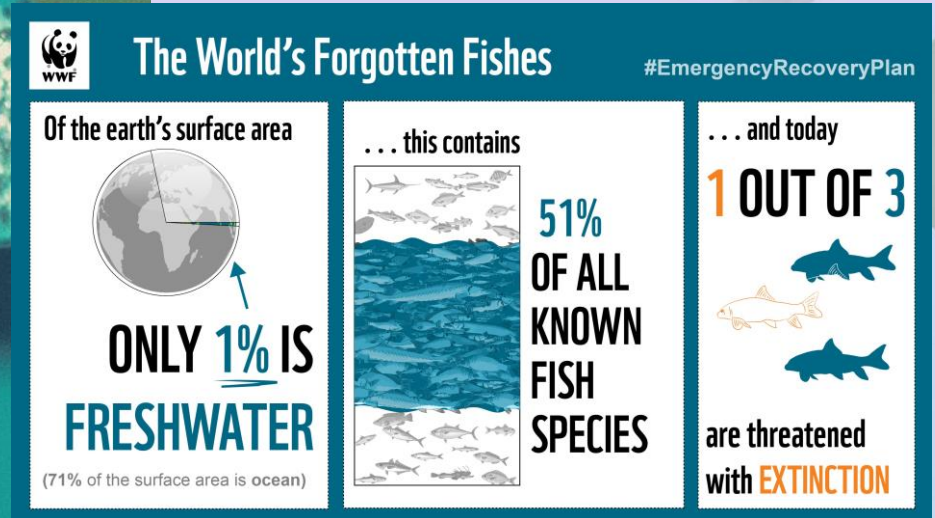


ICES 2020 Report left and right Dekker presented on logarithmic scale



“Migratory freshwater fish have declined by 93% since 1970 in Europe

LIVING PLANET INDEX
FOR MIGRATORY
FRESHWATER FISH



93% Matches the EEL

Authors [Chris Baker \(Wetlands International\)](#), Stefanie Deinet (Zoological Society of London - ZSL), Robin Freeman (Zoological Society of London - ZSL), Guenther Grill (McGill University), [Richard Holland \(Wetlands International\)](#), Bernhard Lehner (McGill University), [Jane Madgwick \(Wetlands International\)](#), Valentina Marconi (Zoological Society of London - ZSL), Louise McRae (Zoological Society of London - ZSL), Jeff Opperman (WWF-International), [Stuart Orr \(WWF-International\)](#), Thomas Pienkowski (Oxford University), Jamie Pittock (Australian National University), Kate Scott-Gatty (Zoological Society of London - ZSL), Michele Thieme (WWF-US), [Dave Tickner \(WWF-UK\)](#), Sarah Whitmee (Oxford University)

Biodiversity Strategy - Key targets related to water

30% of EU land and sea protected, 1/3 of which under 'strict protection'

- **Freshwater ecosystems** are included

Restoration of freshwater ecosystems:

- Increased efforts to **restore freshwater ecosystems and the natural functions of rivers**
- **Restore at least 25,000km free flowing rivers**
 - Removal of primarily obsolete barriers
 - Restoration of floodplains and wetlands
- **Restore and preserve ecological flows** → Member States review water abstraction and impoundment permits – WFD objectives to be met by 2027

Focus → To implement and enforce EU environmental legislation



Proposal for a new Nature Restoration law, under the Biodiversity Strategy – **Q3 2022**

16





“Eel Regulation is Fit for Purpose”

*The recent evaluation of Regulation 1100/2007⁽¹⁾ found that the **regulation is fit for purpose**; however, more efforts are needed to ensure that **Member States implement** it appropriately, and to ensure in particular a **greater focus on non-fisheries related measures** to help the stock recover. The Commission is assessing the most suitable way forward to address the findings of the evaluation. As underlined in the President of the Commission’s mission letter to the Commissioner for Environment, Oceans and Fisheries, priority is given to **the full implementation of the relevant EU policies** in line with the mandate of the current Commission.*

14 Sept 2020

‘For protection and sustainable use’



**SEG next EP Event
13 July 2022**

Retaining the EU Regulation and focusing on better implementation - SEG played a full part. Poseidon

EN E-000597/2022 Answer given by Mr Sinkevičius on behalf of the European Commission (7.4.2022)

- The 'Eel Regulation ' provides a framework for the protection and sustainable exploitation of the European eel,.
- The Commission is not yet in a position to inform about future measures but **it is clear that more efforts are needed to implement the Eel Regulation with a greater focus on non-fisheries impacts** .
- In light of the recent advice of the International Council for the Exploration of the Sea (ICES) on eels , the Commission launched a stakeholder consultation on how to best implement this advice. By mid-April 2022,
- **ICES will also issue its advice on the progress of implementing Eel Management Plans by Member States.** It will inform decision-making on possible management approaches. As eel conservation and management are wide-ranging issues, **the management measures will need to take into account fisheries and environmental considerations as well as socio-economic impacts.**

Sustainable
Eel Group



***Journey to ISEAL Code Compliance.
SEG is already an ISEAL Community Member
(Aug 2019)***

greenin**partner**

**SEG appoints CAB
1 March 2022**



**The reinvented
sector based on
SEG Standard**

Number of French Glass Eel Fishermen certified 2022

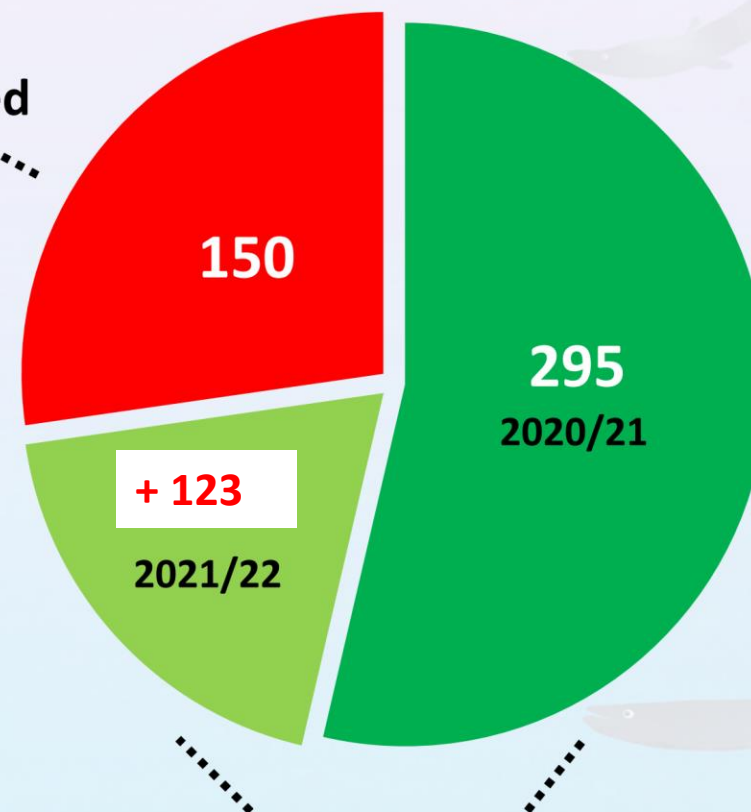
80%

French Glass
Eel Fishermen
certified

110m Glass Eels



Uncertified



Total 418 SEG Certified

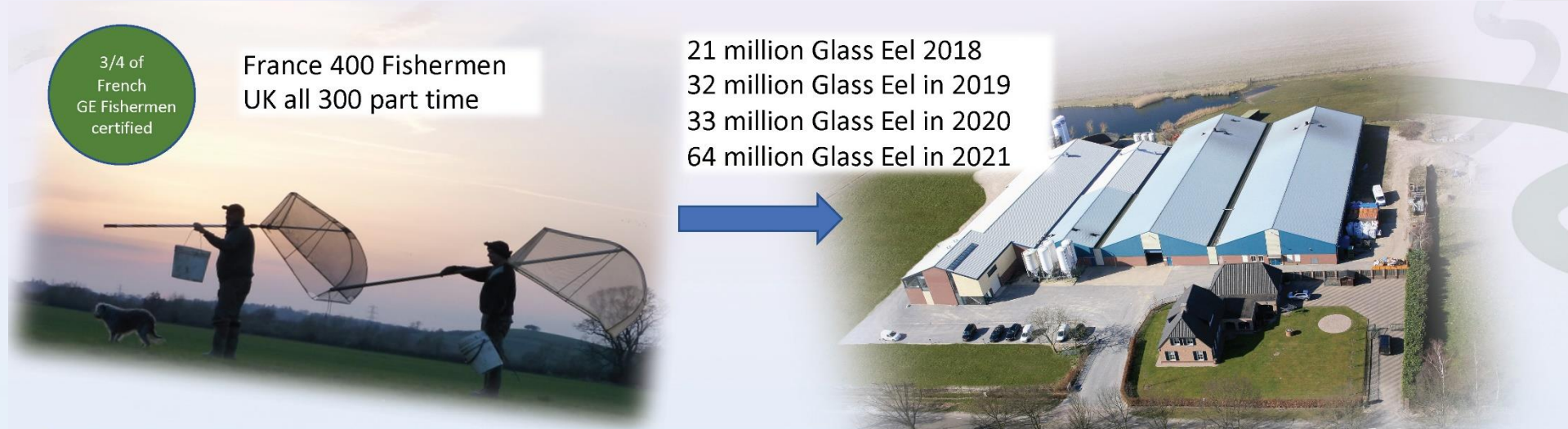
Growing Impact of SEG Standard in building fully traceable supply chain



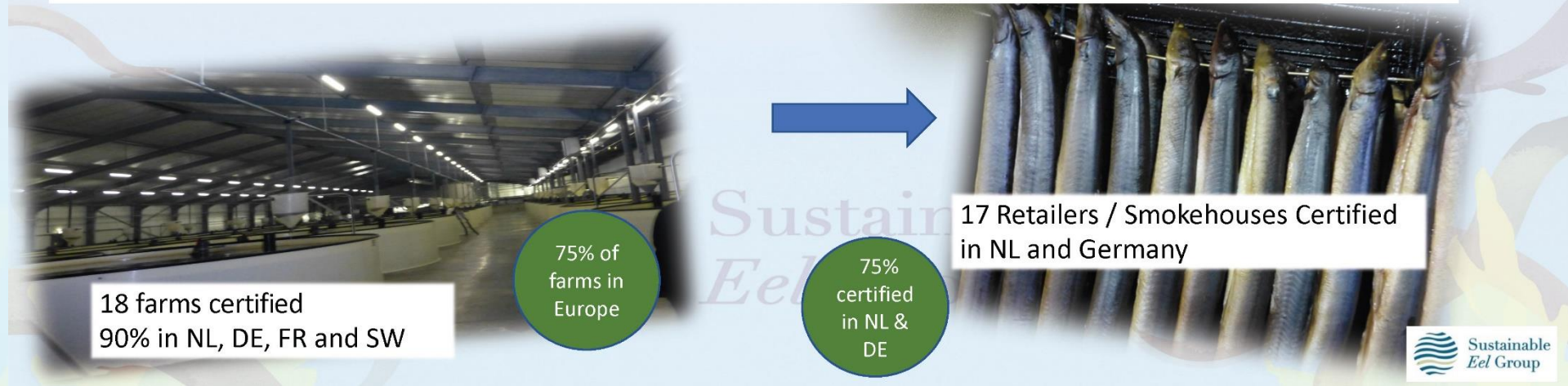
Fishing mortality down from 42% (Briand data 2007) to less than 8% (FishPass Study) 2020 for the Vilaine, Brittany for the 50 + SEG Certified fishermen

SEG Standard has impact

110 million for 2022

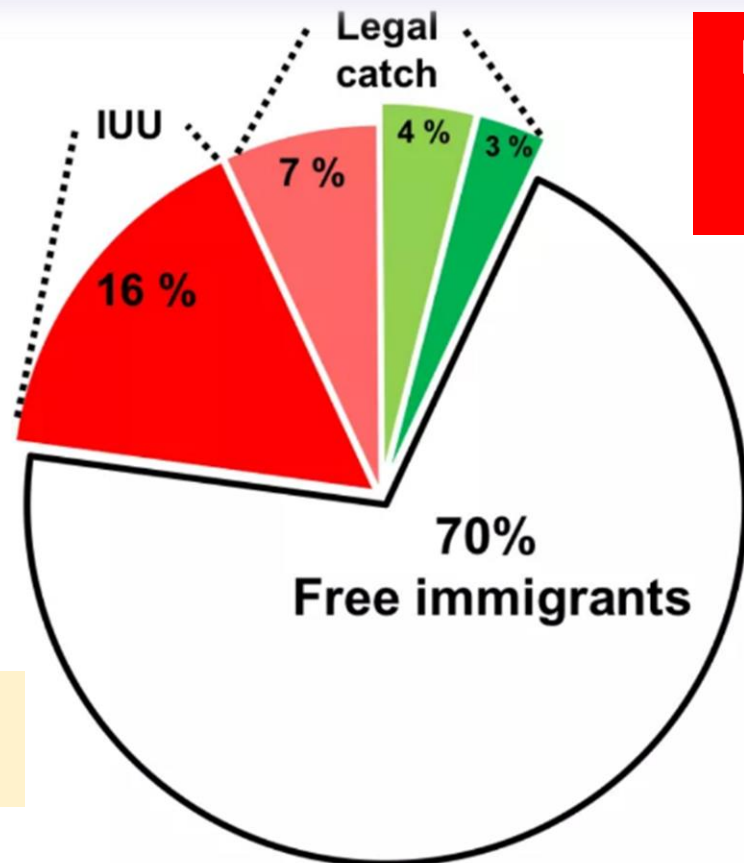


Growing Impact of SEG Standard in building a fully traceable supply chain

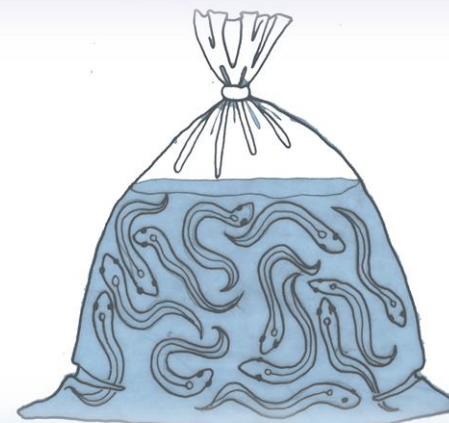


The Reinvention Taking Place the sector becomes the Eel Steward

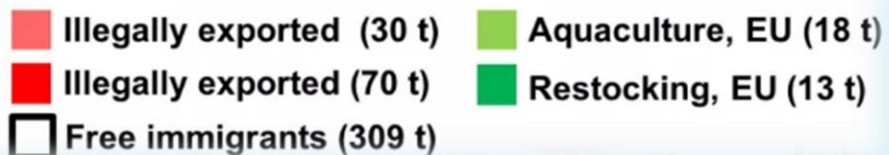
2018



Eel Trafficking
reducing the
23% IUU



Total Recruitment
1.3 billion pa



Sustainable
Eel Group

Trafficking Updates 2022

SEPRONA / EUROPOL

18th April 2018

MADRID

100 tons / 300 + million Glass Eels a year



Trafficking
expected to
grow in
2022

Reported Seizures

16 million	2016 - 17
17 million	2017 - 18
15 million	2018 - 19
10 million	2019 - 20
1.38 million	2020 - 21



Eel trafficking
influenced by
the COVID-19
pandemic

Reported Arrests

48	2016 - 17
98	2017 - 18
154	2018 - 19
108	2019 - 20
52	2020 - 21



85%
Reduction
since 2016*

Operation Lake V

Update 19 Nov 2021

58 000+ inspections across Europe
Seizures including: 387 kg of glass eels and
25 kg of adult eels valued at about EUR
1.241 million

<https://www.europol.europa.eu/media-press/newsroom/news/eels-shipped-air-found-in-operation-lake-v>

Trafficking Continues

- *300,000 plus in 8 Suitcases*
- *3 Arrests*
- *Portugal to NL to Malaysia*
- *11 April 2022*

Recent ASIA Press Reports

Suggest 85% Reduction ??

<https://www.sustainableeelgroup.org/counter-trafficking-success-is-reflected-by-crash-in-european-glass-eel-supply-into-chinese-eel-aquaculture/>

Eel smuggler hit with world
record €7.2m fine

3 Feb 2022



USA Quota Price Per Lbs over \$2100 in April 2022



Working to SEG Standard and effective counter trafficking save 100s of millions of glass eels annually



40% of 60 ton or 200m quota
70 to 80 million Glass Eels saved



100 tons pa 300 to 350 million Trafficked
Reduced to 20% is about 250 million saved

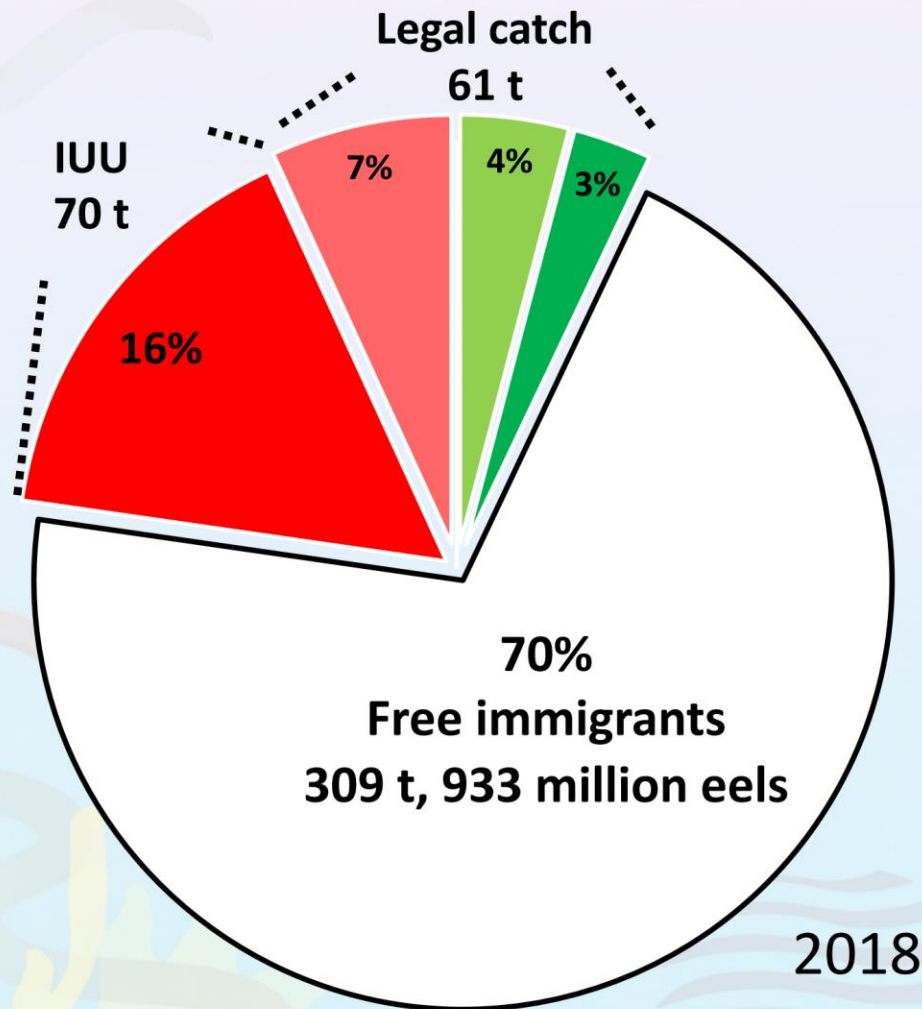
TOTAL ANNUAL reduction

300 +
million Glass Eels

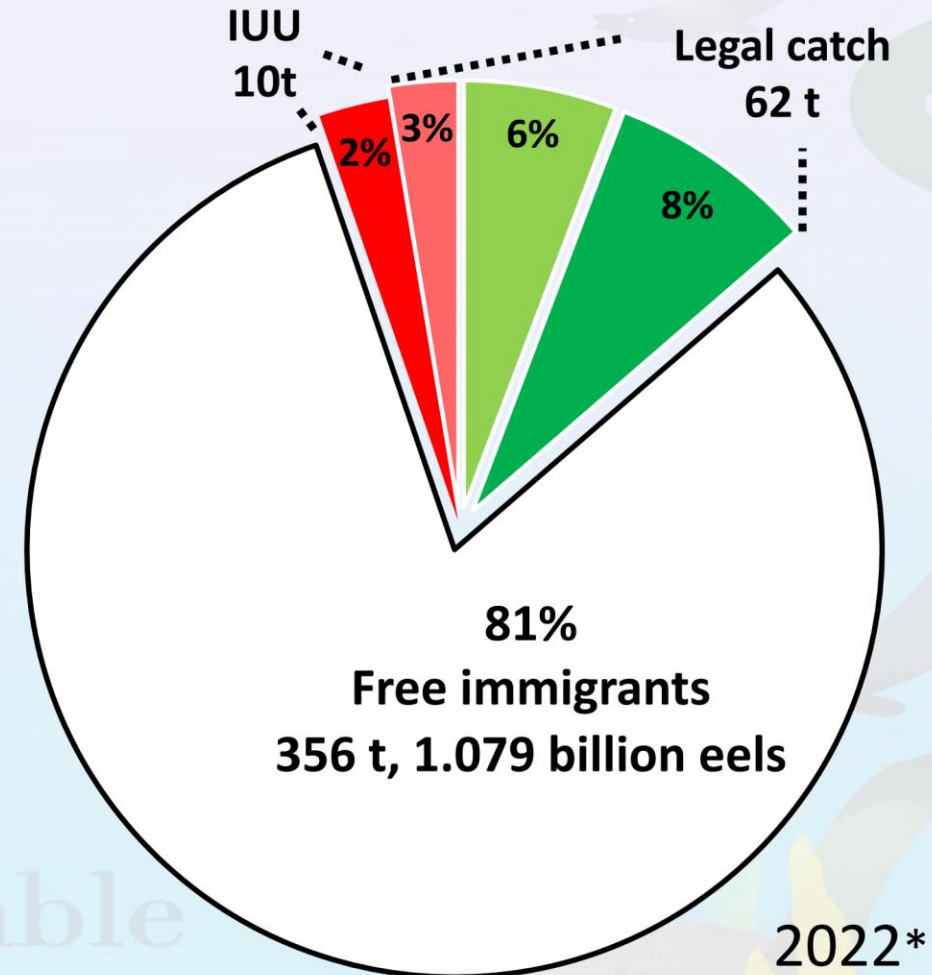
Exploitation of total glass eel recruitment

(440 tonnes per annum or 1.33 billion fish)

Warning
Data still being verified



Eel Trafficking reduced
approx. 80%



■ Illegally exported
■ Illegally exported

■ Aquaculture, EU
■ Restocking, EU
□ Free immigrants

Sustainable
Eel Group



*SEG estimates prior to survey

Better Implementation..“It is only Eel”..improving EMPs



← Tweet



Ecofact
@EcofactEcology

This story was covered by The Times in November 2015. Nothing has changed and tens of thousands of [#eels](#) have been killed in the [@ESBGroup](#) turbines since then. The [@InlandFisherIE](#) report into the recent large eel kill is a disgrace.



thetimes.co.uk

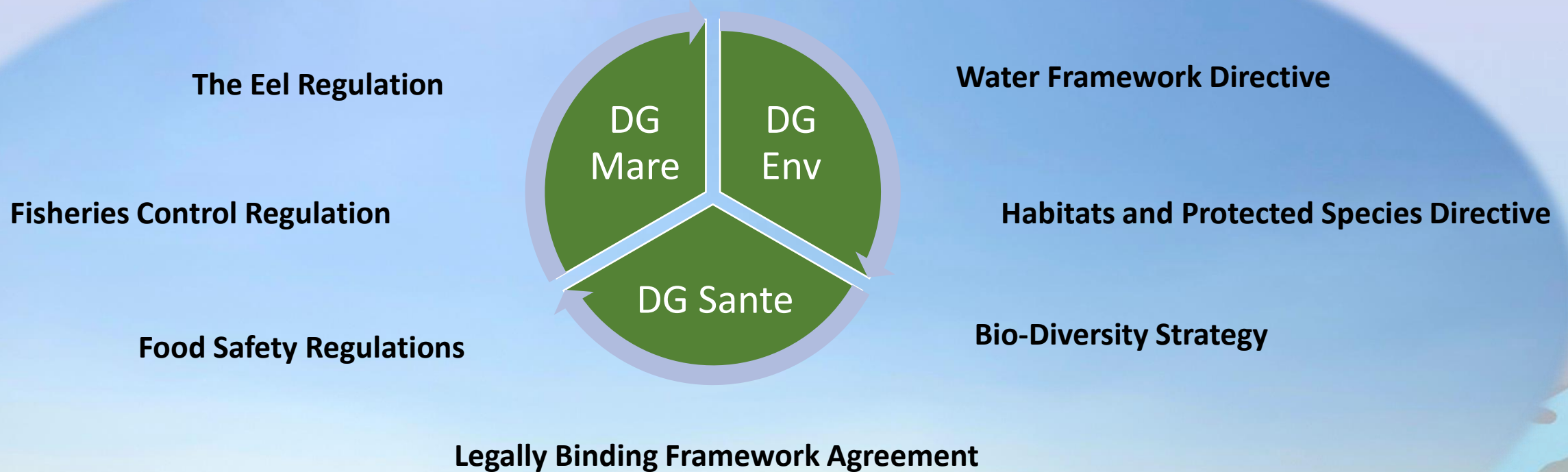
Power plant ‘should be turned off’ to save eels

Thousands of a critically endangered species of eel are being killed by the Ardnacrusha power station as they migrate to the sea to spawn, prompting ...



EEL and the GREEN DEAL

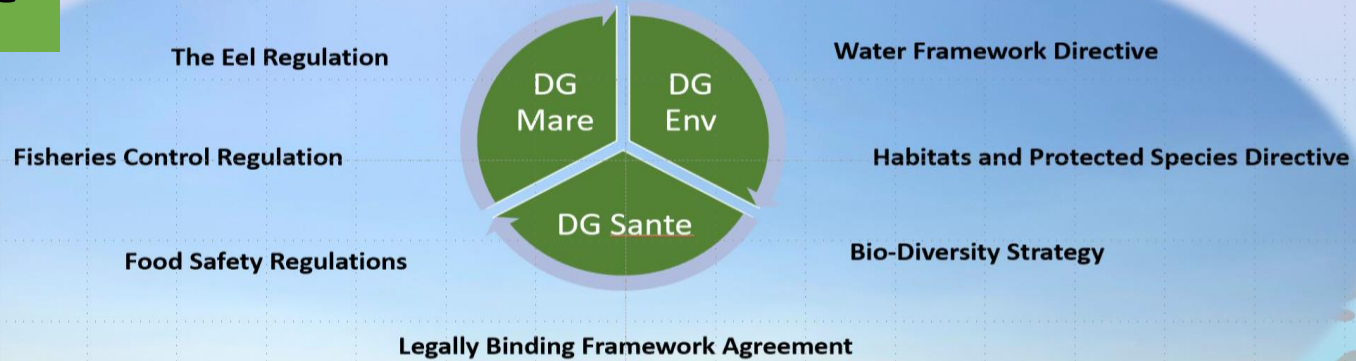
“Fully integrated cross cutting approach using EMFAF”



#EelDeal

EEL and the GREEN DEAL

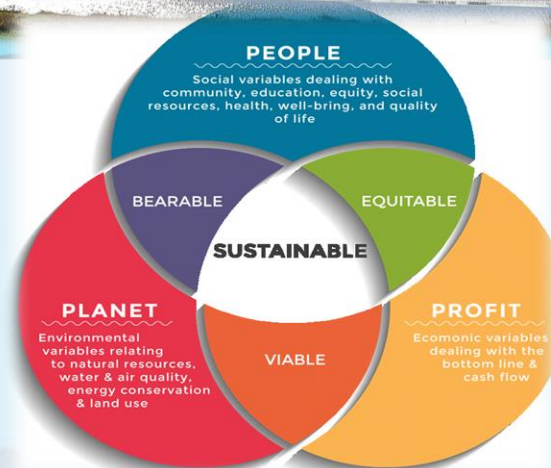
"Fully integrated cross cutting approach using EMFAF"



Focus on Total Protection



**Eel Reg
1100/2007**



SEG Standard

Governments and NGO's are struggling to deliver on eel to meet the challenges of long term recovery it is not separate from the Green Deal but a totemic emblem of it

A 50 Year Time frame of Continuous Improvement

Regulation is fit for Purpose
and the concept of distributive
control appropriate

- Ambition
- Eel Reg

- Eel Mgt Plans
- Multi level

Under focused on the
non fishery mortalities

Feedback loop is weak
and is not triggering
improvement on the critical
areas for increased protection.
No link to Green Deal

- Feed Back

- Effective Action

Significant
investment started

40% Protection on route to 60%

**Protection remains below the minimum level needed for long
term Recovery**

A 50 Year Time frame of Continuous Improvement

Regulation is fit for Purpose and the concept of distributive control appropriate

- Ambition
- Eel Reg

- Eel Mgt Plans
- Multi level

Under focused on the non fishery mortalities

Feedback loop is weak and is not triggering improvement on the critical areas for increased protection. No link to Green Deal

SCIENCE

- Feed Back

LEADERSHIP

MANAGEMENT

Evaluate

Act

- Effective Action

Significant investment started

40% Protection on route to 60%

Protection remains below the minimum level needed for long term Recovery

SEG DIRECTIONAL OBJECTIVES 2020 – 2025

AIM *SEG as the leading, the most authoritative and the most influential voice on Eel (AA) whilst not becoming a bureaucracy – ‘the small and agile strategy’.*

1. Leadership and Advocacy: #EelDeal

- 1.1. To encourage the **full** implementation of the Eel Regulation both within and beyond EU
- 1.2. To promote and facilitate the counter trafficking agenda
- 1.3. To support WI-EA on wetland and river restoration and unblocking migration pathways
- 1.4. To add a SEG perspective to ICES, CMS and CITES thinking

2. SEG Standard:

- 2.1. To achieve ISEAL Code Compliance in 2022 (Community Member since Aug 2019)
- 2.2. To contract and delegate Standard Admin via the CAB model: 2021 - 2022
- 2.3. To make certification conditional on 100% use of SEG caught eel: 2022 – 2023
- 2.4. To consider expanding the supply chain to embrace yellow and silver fisheries

3. Sustainability Impact:

- 3.1. To report annually on progress made increasing eel protection via sustainability

4. A multi decadal approach:

- 4.1. To consolidate and strengthen SEG and promote the longer term perspective on eel its history, cultures and trends

Marie Lecomte



Comité National des pêches Maritimes et des Elevages

National Committee for Maritime Fisheries and Food

The 2022 glass eel fishing season

MARINE CAPTURES (15th April 2022)

DATES DE PÊCHE DE L'ANGUILLE DE MOINS DE 12 CM		SUNI QUOTA MARITIME CVELLE SAISON 2021/2022 (1er novembre 2021 au 25 mai 2022 selon UGA)													
Zone fluviale	Zone maritime	Unité de gestion anguille (UGA)	Code UGA	Quota Repeuplement /UGA (Kg)	Quota Consommation /UGA (Kg)	Quota Total /UGA (Kg)	Seuil d'arrêt de pêche du quota 80%	Captures Repeuplement		Captures Consommation		Achats mareyeurs Total /UGA (Kg)**	Captures FAM Total /UGA (Kg)**	Déclarations des professionnels dont télédéclarations	Reste à pêcher
								Captures (Kg)	% consommé du sous quota	Captures (Kg)	% consommé du sous quota				
Pas de pêche	10/01 au 25/05	Artois-Picardie	ARP	390	410	800	640	71,390	18,31%	197,210	48,10%	268,600	269,960		530,04
Pas de pêche	10/01 au 25/05	Seine-Normandie	SEN	771	630	1401	1120,8	0,000	0,00%	295,900	46,97%	295,900	264,140		1105,10
	01/12 au 30/04	Bretagne	BRE	3908	2339	6247	4997,6	3747,600	95,90%	2338,760	99,99%	6086,360	7939,441		-1692,44
1/12 au 30/04		Loire, Côtiers vendéens et Sèvre niortaise													
		LCV OP Estuaires	LCV OP	13824	9216	23040	18432	13135,110	95,02%	9188,177	99,70%	22323,287	21059,478		716,71
		LCV hors OP	LCV hors OP	4505	3003	7508	6006,4	2216,480	49,20%	2414,900	80,42%	4631,380	4367,230		2876,62
	15/11 au 15/04	Garonne-Dordogne-Charente-Seudre-Leyre	GDC	8581	5721	14302	11441,6	7988,960	93,10%	5447,040	95,21%	13436,000	15563,083		-1261,08
	01/11 au 31/03	Adour-Cours d'eau côtiers	ADR	1951	1301	3252	2601,6	400,180	20,51%	1242,330	95,49%	1642,510	1652,590		1599,41
		Sous-Totaux quota maritime		33930	22620	56550		27559,720	81,23%	21124,317	93,39%	48684,037	51115,922		5434,08
		Quota fluvial*		4485,00	2990	7475									
		Total général (y compris fluvial)		38415,00	25610,00	64025,00									

*Avis n°2 relatif à la formation de quotas pour les quotas de pêche pour l'année 2022 (MFRM20220201) publié au JO du 5 février 2022

Le 15 avril 2022

SUIVI QUOTA EAU DOUCE CIVELLE SAISON 2021/2022 (1er novembre 2021 au 25 mai 2022 selon UGA)

DATES DE PÊCHE DE L'ANGUILLE DE MOINS DE 12 CM	Unité de gestion anguille (UGA)	Code UGA	Quota Repeuplement /UGA (Kg)	Quota Consommation /UGA (Kg)	Quota Total /UGA (Kg)	Seuil d'arrêt de pêche du quota 80%	Captures Repeuplement (déclarations)		Captures Consommation (déclarations)		Reste	
							Captures (Kg)	% consommé du sous quota	Captures (Kg)	% consommé du sous quota		
											repeuplement	consommation
01/12 au 30/04	LCV OP Estuaires	LCV OP	1791	1194	2985	2388	1463,6	81,72%	1152,945	96,56%	327,4	41,055
	LCV hors OP	LCV hors OP	159	106	265	212	159	100,00%	106	100,00%	0	0
15/11 au 15/04	Charente-Seudre	GDC	390	260	650	520	332,742	85,32%	246,3	94,73%	57,258	13,7
	Garonne-Dordogne-Leyre	GDC	780	520	1300	1040	779,97	100,00%	511,212	98,31%	0,03	8,788
1/11/ au 31/03	Adour - Cours d'eau côtiers	ADR	1950	1300	3250	2600	922,577	47,31%	1165,285	89,64%	1027,423	134,715
	Sous-Totaux fluviaux		5070	3380	8450							

INLAND CAPTURES
(15th April 2022)

BRIEF SUMMARY OF THE FISHING SEASON

Hauts de France: not much fishing, glass eel not very abundant. Fishing in the Hauts de France is done in front of a dam, which had its gates open throughout the campaign.

Normandy: few glass eels this year, due to the lack of water in the wetlands.

Brittany: abundance of glass eel. 100% of the initial quota has been reached. Over the last 10 years, this is the second best season with 2017-2018. No difference observed in the arrival of glass eels between the north and south of Brittany.

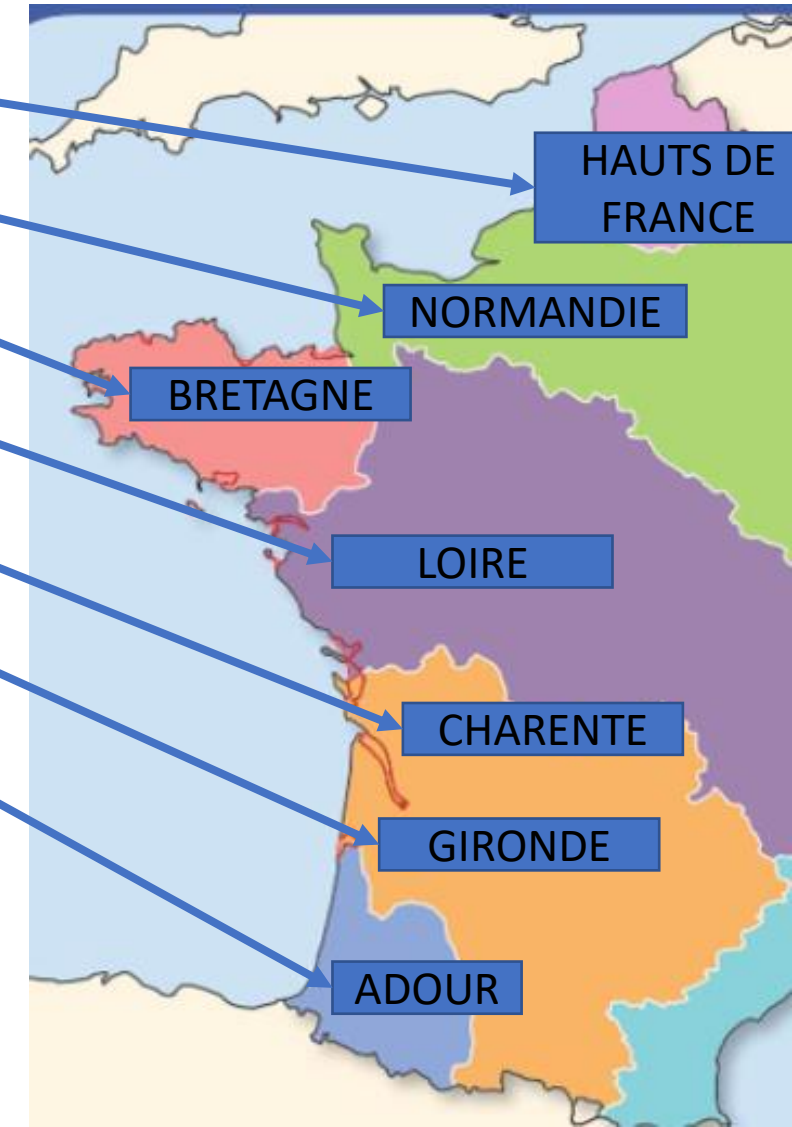
Loire: confirmed the very high abundance of glass eels in the Loire basin as well. It was observed that there were tides of 30 to 40 kilos, which had not been observed since 2014.

Charente: abundance of fish, very fast fishing.

Gironde: the campaign went very well. Large number of glass eels passing through the canal des étangs.

Adour: rather average season, due to a flood in December which caused the fish to leave.

Mediterranean: MRM and the University of Perpignan noted good elver returns this year, as did the professionals. CONAPPED underlines the case of the Rhone, which is completely blocked by dams and that colonization is made impossible.



Annual General Meeting

Agenda

3. Chairman's Report

b. SEG Standard and ISEAL



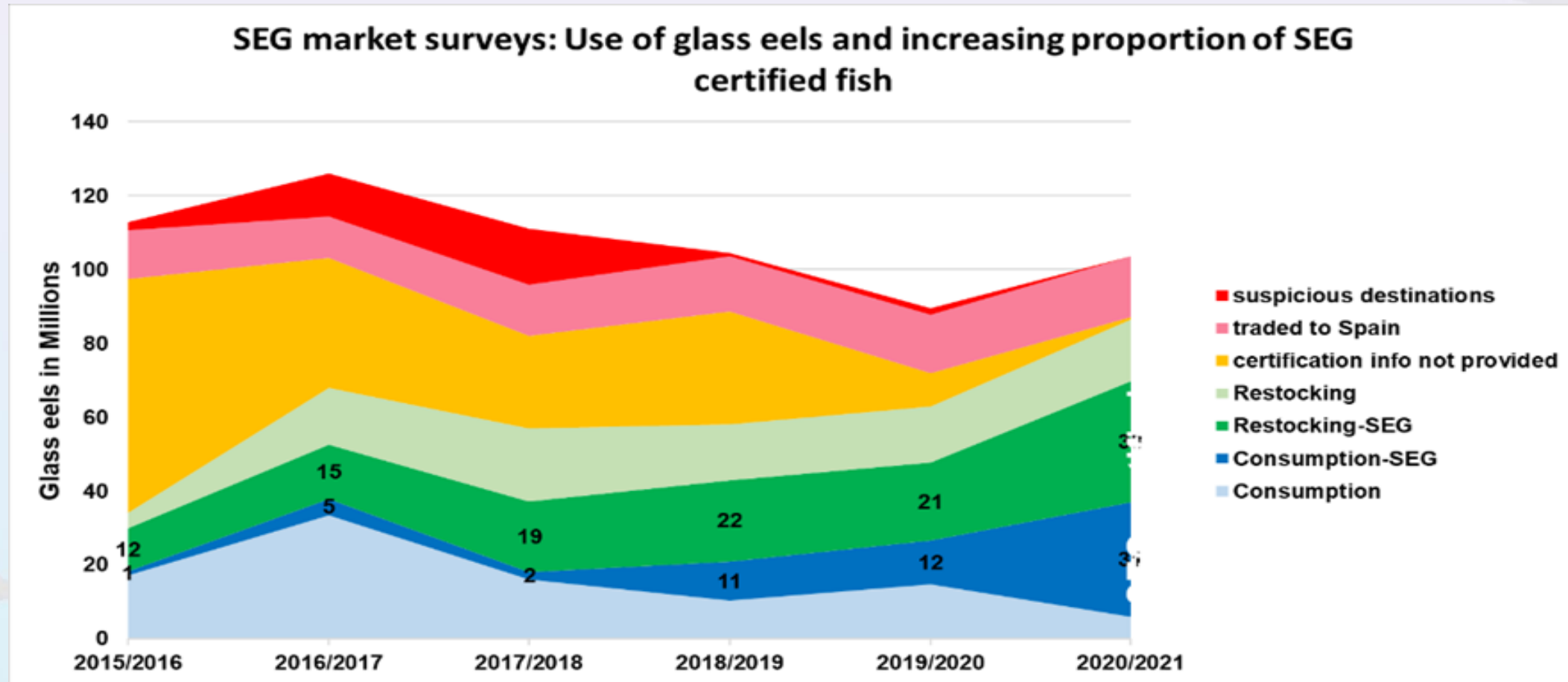
Sustainable
Eel Group

SEG Certification

Sector	Glass eel fishery	Trader	Farm	Processor/ Smoker	Total
Country					
Denmark			1		1
France	23	4	1		28
Germany			3	1	4
Netherlands			8	14	22
Sweden			1	1	2
Morocco			1		1
United Kingdom	2	3		2	7
Total	25	7	15	18	65

- **80% of farmed eels in Europe**
- www.sustainableeelgroup.org/seg-certificate-register/

Glass eel market survey



- 2021: 60% of glass eels sold SEG certified
- 2022: Renewing survey
- Market demand in Europe can increasingly be satisfied from SEG certified sources

ISEAL Journey

- **2019** Associate Member
- **2020** Transferred to new 'Community Member'
- **2020 - 2021** Annual Improvement Plans
- **Mar 2022** Conformity Assessment Body appointed
- **May 2022** Start 5 year SEG Standard Review (version 7)
Publish June 2023
- **June 2022** Gap analysis for ISEAL Code Compliance
- **2022 – 2023** Continue progress towards ISEAL Code Compliance
Hope to accelerate in 2022



Sustainable
Eel Group

American Eel Standard

1. Pilot December 2021 – July 2022
2. Future phases if pilot successful
3. **SEG Standard for American Eel**



Sustainable
Eel Group

Annual General Meeting

Agenda

3. Chairman's Report

c. #EelDeal2030

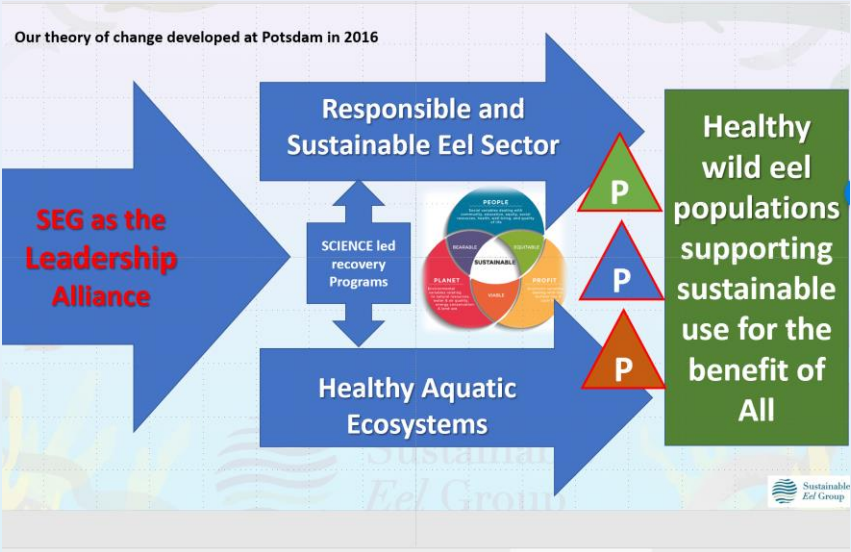


Sustainable
Eel Group

#EelDeal



The Foundation Call of 2009....



Confirmed 2016 Theory of Change

And from 2020 reported upon
Social, Economic & Environmental Impacts



Annual General Meeting

Agenda

3. Chairman's Report


d. Events 2022



Sustainable
Eel Group

Month	Event	Proposed Thinking	Note
Jan	EU-COM Eel Consultation	SEG to engage and shape Influence Consultation	Post sustainability Impacts
Feb	ICES wksp led by JJ	Willem engages again Establish PECH Eel Leader	Counter trafficking stories Aal Initiative web goes live?
Mar	Green Partner is SEG CAB		CAB widely announced
		EU Consultation over	
Apr	SEG AGM (on line) 21 Apr		Communicate #EelDeal to SEG
	Scottish Eel Conference	Edinburgh on 22 nd April	Test #EelDeal?
May			
	Trip to farm / restock NL	20 th May	Influential Brussels People
June	CC Report Mike Read		Plan Code Compliance
July	SEG Brussels Event in EP	13 th July Annie P to chair	Eel wide Focus - #EelDeal 2030
Aug			
		SEG/ESA workshop?	Shape eel leadership
Sept	6 to 9 ICES Working GP		Launch Consultation SEG Std V7
		SEG CC docs to ISEAL?	
Oct		Launch Combined Logo?	ISEAL CC is the story
			Pau Court Case for AA
Nov	SEG Target for ISEAL CC?		
Dec	Council AgriFish Meet	#EelDeal is the thinking	Eel kept low in marine agenda

4. Financial Report

		2021 actual	2022 Budget
Accounts 2021 and Budget Plan 2022			
Income			
ESF and donations			
CORE ESF contributions	€	197,228.00	€ 197,228.00
Other country contributions	€	5,000.00	€ 8,000.00
Other donations	€	20,619.20	€ 12,000.00
Total ESF and donations	€	222,847.20	€ 217,228.00
Grants	€	18,466.78	€ 9,077.00
Total income	€	241,313.98	€ 226,305.00
Expenditure			
Salaries	€	168,992.31	€ 132,341.69
Partners	€	15,100.00	€ 15,100.00
Office	€	1,062.18	€ 1,094.05
Professional fees	€	13,098.33	€ 18,492.50
Public affairs / PR	€	767.49	€ 2,000.00
Meetings / conferences	€	2,229.54	€ 3,750.00
Other / miscellaneous	€	1,683.91	€ 2,210.00
Total expenditure	€	202,933.76	€ 174,988.23
Creditors payments		€ 43,000.00	€ 43,000.00
Balance: Income / Expenditure	€	-4,619.78	€ 8,316.77

Annual General Meeting

Agenda

5. Any other business



Sustainable
Eel Group