

The background of the slide is a faded, artistic illustration. It depicts a large eel, possibly a European eel, with its head at the top and body curving downwards. The eel has a brownish-gold body with darker spots. Below the eel, there are several hands, likely belonging to a fishmonger, reaching up towards the eel. The hands are rendered in a simple, stylized manner. The overall color palette is muted, with earthy tones like browns, greys, and soft blues.

# **Welcome to SEG's Annual Conference**

31 May 2016

Fishmongers Hall

Andrew Kerr  
Chairman

One genetic  
population  
'PANMETIC'



# Special Welcome

- All the Speakers and Translators
- SEG Founders
- Ricardo Serrao Santos MEP
- Cy Griffin Wetlands International
- TRAFFIC, River Trusts, ZSL, ECOFACT
- x 4 ICES
- x 10 from France
- x 3 from Portugal
- Telecapêche
- One World Standards
- Good Fish Foundation (observing)
- Burson Marsteller
- Apologies

Science Conservation Commercial



**11:00** Andrew Kerr SEG Chairman's welcome

**11:15** Willem Dekker's **"Without international steering, nobody will protect the eel"**  
analysis of the steering models governing the eel across Europe. 15 min for Q

**12:15** Re-inventing the fishery and Industry Alex Koelewijn

**12:30** ISEAL Programme Matthew Wenban-Smith

**12:45** AGM business (members only)

**13:00** **Buffet Lunch and Group Photograph 1355 on stairs**

**14:00 Stopping the Illegal Trade or Trafficking in eels** (20 min presentations and 40 min Q  
Florian Stein's & Vicki Crook's present findings on trade in 2016  
Ricardo Serrao Santos MEP for Azores and Commissioner for Sargasso Sea Alliance  
**Signing of the SEG Declaration** by Ricardo and Andrew

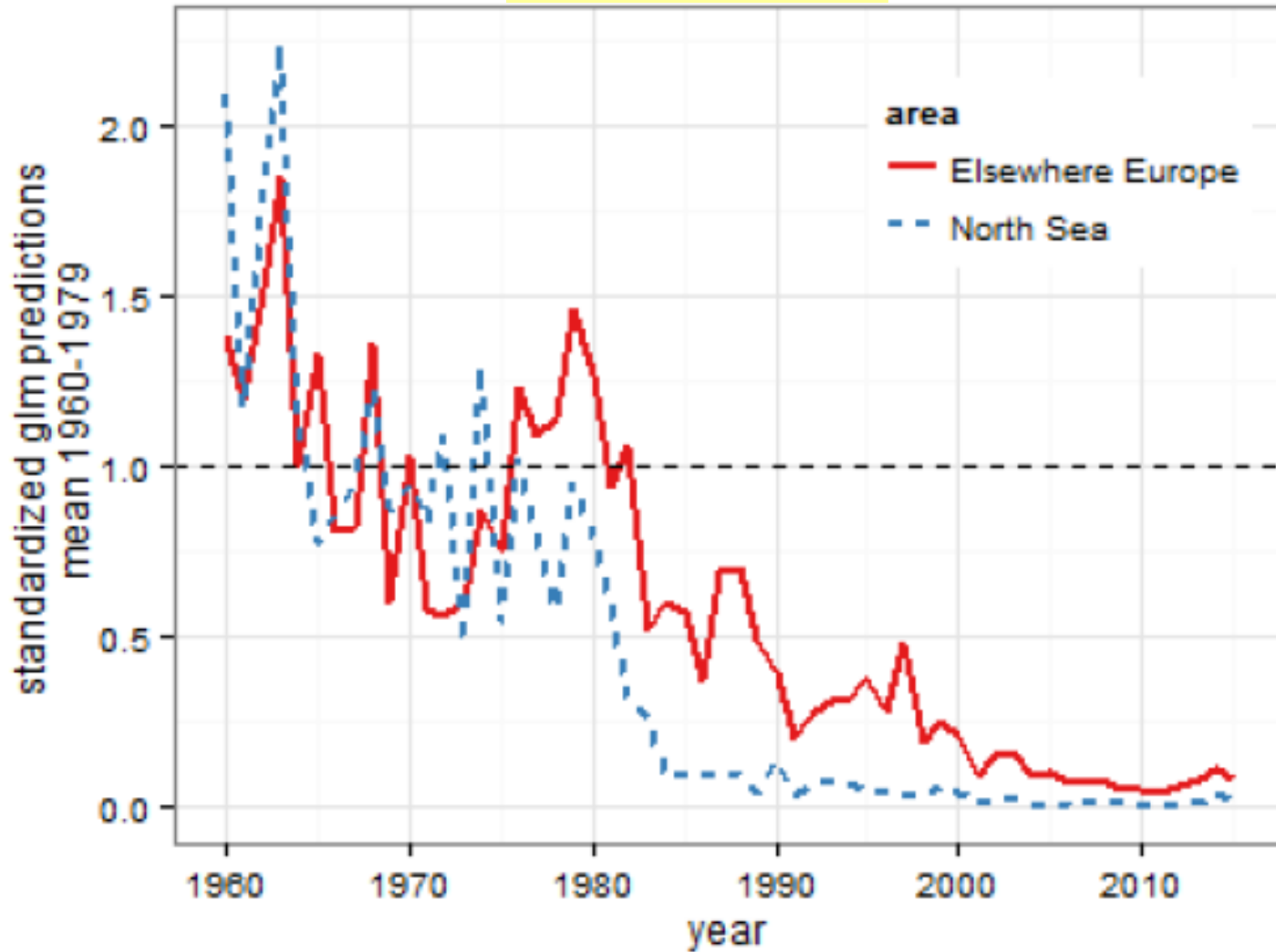
**Panel Discussion** led by Andrew. with Vicki Crook TRAFFIC, Florian Stein, Alexandre Chailleux  
Telecapêche, Vin Fleming CITES, Jerome Gurruchaga Eel trader (F), Martin Sims UK NWCU.

**15:00** Formal Meeting is closed with concluding remarks from Chairman  
Informal meeting(s) continue after tea and coffee

Leave by 4.00pm



ICES Nov 2015



**“WE ALL HAVE A LOT OF WORK TO DO”**

# Setting Directional Objectives (next 5 years) to 2020

1. To organise and mature **SEG's governance** and structures as one European entity
2. To **win funding** to achieve SEG's goal
3. To develop **the communication network across Europe** so that the SEG message is heard, believed and acted upon
4. To enable, coordinate and expand **sound eel scientific** research
5. To build and develop **conservation programmes** with partners throughout the eel's natural range
6. To **promote sustainable fisheries and commercial supply chains** in the major countries concentrating on the 'Atlantic' focus first
7. To **achieve ISEAL Membership** (accreditation) for the SEG Standard, its governance and complementary programmes

Collaborate    Communicate    Objective    Openness    Transparency    Traceability



**Andrew Kerr**  
Chairman  
SEG

**Willem Dekker**  
Science Leader  
SLU Sweden

**"A Multi Stakeholder Approach"**



**The SEG Europe Leaders**

**Alison Debney**  
Conservation Leader  
ZSL UK

**Alex Koelewijn**  
Commercial Leader  
DUPAN NL



**Sustainable *Eel* Group, 31 May 2016, Fishmongers Hall, London**



# **The European Eel as a flagship species for EU water policy and migratory fish**

**Wetlands International – European Association**

Cy Griffin







£80m



600 +







# Parcours de pêche sportive

## Le gîte d'Oloron

Communes de  
Caresse-Cassaber et  
Castagnède

**mentation**

**rie piscicole :**  
pêche ouvert du 1<sup>er</sup> janvier au 31 décembre

**ouverture :** 2<sup>ème</sup> samedi de mars au 3<sup>ème</sup> dimanche de septembre  
lure 25 cm  
2 truites /aries/jour/pêcheur.

**ectoral affiché.**

La Communauté de Communes de Salies de Béarn, les communes de Caresse-Cassaber et Castagnède, l'AAPPMA du gîte d'Oloron, en partenariat avec la Fédération de Pêche ont mis en commun leur savoir afin d'engager un programme pluriannuel de gestion et valorisation des milieux aquatiques sur ce site :

- Amélioration des conditions d'accueil sur site : cabane pêcheurs, tables, bancs, barbecue...
- Signalétique pédagogique,
- Empoisonnements réguliers.

Retrouvez toutes les infos sur le tourisme en Béarn des Gaves et fluscha! le code

### ons présents

#### LES "SEDENTAIRES"

##### Truite arc-en-ciel

L'arc-en-ciel est le plus commun des poissons de la Garonne. Elle est présente dans tous les cours d'eau de la région. Elle est très appréciée pour sa chair blanche et sa texture fine. Elle est également connue pour sa capacité à sauter hors de l'eau.

##### Truite fario

Le fario est une variété de truite qui se trouve principalement dans les zones montagneuses. Elle est caractérisée par sa robe colorée et sa forme élancée.

##### Barbeau

Le barbeau est un poisson d'eau douce qui se trouve dans les rivières et les lacs. Il est connu pour sa capacité à creuser dans le fond de l'eau à la recherche de nourriture.

##### Chevesne

Le chevesne est un poisson d'eau douce qui se trouve dans les rivières et les lacs. Il est connu pour sa robe argentée et sa forme élancée.

##### Perche

La perche est un poisson d'eau douce qui se trouve dans les rivières et les lacs. Elle est connue pour sa robe argentée et sa forme élancée.

#### LES MIGRATEURS

##### Saumon

Le saumon est un poisson migrateur qui passe une partie de sa vie dans l'eau douce et l'autre dans l'eau salée. Il est très apprécié pour sa chair blanche et sa texture fine.

##### Truite de mer

La truite de mer est une variété de truite qui se trouve principalement dans les zones littorales. Elle est caractérisée par sa robe colorée et sa forme élancée.

##### Anguille

L'anguille est un poisson migrateur qui passe une partie de sa vie dans l'eau douce et l'autre dans l'eau salée. Elle est connue pour sa forme allongée et sa robe argentée.

##### Alose

L'alose est un poisson migrateur qui passe une partie de sa vie dans l'eau douce et l'autre dans l'eau salée. Elle est connue pour sa robe argentée et sa forme élancée.

**Contacts utiles :**

- AAPPMA du gîte d'Oloron : 06 73 87 00 29
- Fédération Départementale de Pêche : 05 99 89 50 50
- Office National de l'Eau et des Milieux Aquatiques : 05 62 11 68 00
- Gendarmerie : 112
- Pour plus d'infos : [www.pêcheetmer.com](http://www.pêcheetmer.com)







# Nedströmsspassage Ätran – Nya Herting Sweden

**25,000  
Unscreened  
Hydro Plants**

**Screen and angled pass**

Photo by Marco Blixt



## The Sustainable *Eel* Standard

“IFM Influence”



Similar to MSC  
but for eels



### The aims of the Sustainable Eel Standard:

- Operators can demonstrate their high standards and commitment to sustainability
- Encourages high and responsible standards through the supply chain, from fishery to market
- Encourages sustainable practices and market
- Discourages unsustainable practices and market
- Provides confidence to consumers who wish to buy responsibly
- Part of the solution for sustainable management of the eel in Europe



Over 70% of the  
European Industry



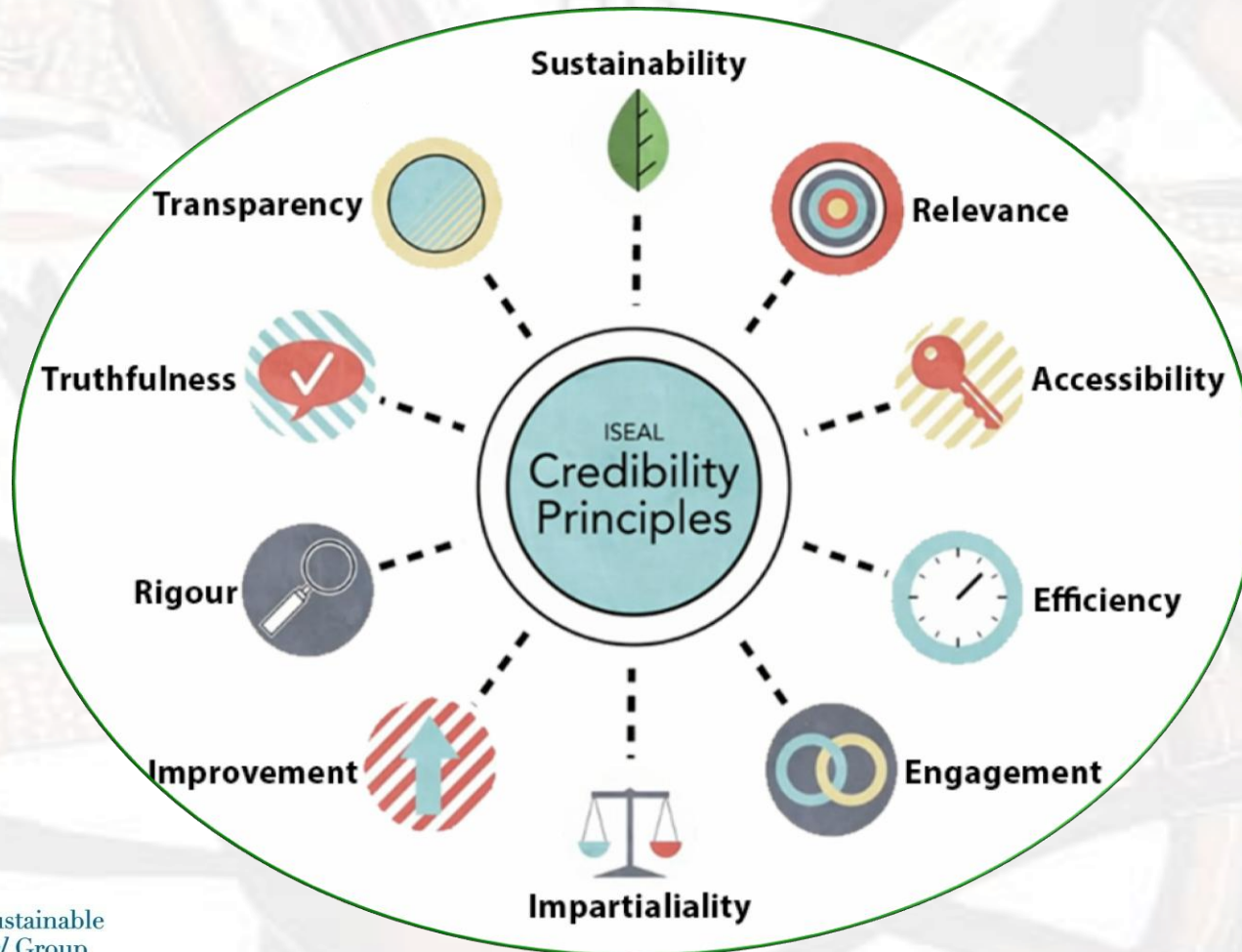
**The mature Standard released at the 2013 Conference. It builds on the experience of 50 assessments. SEG will continue to consult, review and improve.**



# ISEAL Credibility Principles

written into the three Codes

- **Setting Environmental Standards**
- **Assuring Compliance**
- **Assessing Impacts**



Assessing the Impacts of  
Social and Environmental  
Standards Systems  
ISEAL Code of Good Practice

Version 2.0 - December 2014

iseal  
alliance

Assuring Compliance with  
Social and Environment  
Standards  
Code of Good Practice

iseal  
alliance

Setting Social and  
Environmental Standards  
ISEAL Code of Good Practice

Version 2.0 - December 2014

iseal  
alliance

## Enablers

## Key Outcomes

## Impact

### SEG as Leadership Alliance

Common issue for Europe  
Communications Network  
Advocacy  
Credible certification  
Funding Sustainability

Best practice fishing  
Effective restocking  
Reduced illegal fishing & trade  
Increased traceability  
Supported livelihoods

Sound Science  
Conservation Programs  
Standards/Certification  
Policy/Regulations  
Translocation  
Advocacy/Education

Reduced non-fishing mortality  
Reduced non-target by-catch  
Improved river connectivity  
Restored wetland habitats

**Sustainable Eel Sector**  
**Demonstrate Net Benefits**

Depends On  
Contributes To

Mutually Reinforcing

**Healthy Aquatic Ecosystems**  
**Habitat**  
**Water Quality and Flow**

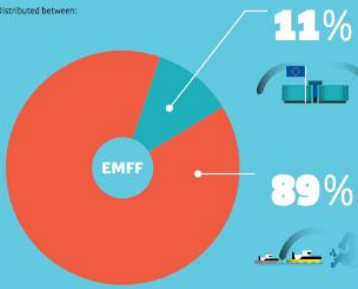
**Healthy wild eel populations** distributed throughout their natural range fulfilling their role in the **aquatic environment** and supporting **sustainable use** for the benefit of communities, local economies and traditions

## The European Maritime And Fisheries Fund 2014-2020

# €6400 M

Allocated in total from 2014-2020.

Distributed between:



11%

### Managed by the European Commission

To support EU-wide objectives in maritime and coastal affairs:

International governance  
Cooperation through exchange of information and best practices  
Public information and support to networking platforms  
Marine Knowledge  
Maritime Spatial Planning

89%

### Managed by the member states

Divided amongst EU countries, the funds are used for:

Reducing impact of fishing on the marine environment  
More market tools for professionals and consumers  
Joint stewardship of protected areas and Natura 2000 sites  
Special support to small-scale fishermen

Among which:



€4340 M

**Sustainable Fisheries**  
Making fisheries and aquaculture more sustainable and profitable.

Ensuring and creating sustainable jobs  
Local development and support to fisheries areas  
Marketing and processing



€580 M

**Control and Enforcement**  
To monitor compliance with the European Common Fisheries Policy and protect a fair access to healthy stocks:

Access to fishing grounds  
Controlling fishing effort, TACs and quotas  
Other technical measures to improve selectivity and sustainability



€520 M

**Data Collection**

To collect the data the scientists need to improve our knowledge of the seas and the long term management of our fisheries.

Understanding and monitoring of commercial species  
Dynamics of single stocks and mixed fisheries  
Ecological modelling of regional basins



€71 M

**Blue Economy**

To unlock sustainable growth and job creation from our seas and oceans, in areas such as:

Maritime surveillance (CISE)  
Improved knowledge of the seas and ecosystems  
Enabling rational exploitation of new marine resources (e.g. energy, biotech)



# INTERREG IVC

INNOVATION & ENVIRONMENT  
REGIONS OF EUROPE SHARING SOLUTIONS



## Horizon 2020

€16 billion for Research and Innovation  
2016-2017

Carlos Moedas  
Commissioner for Research,  
Science & Innovation



## EU Grant Themes

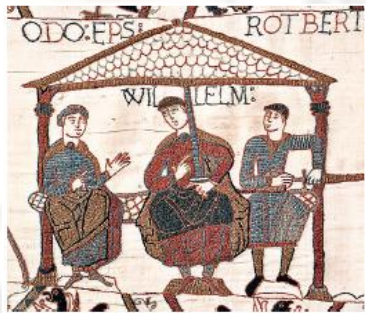


# DUPAN / Aal Initiative

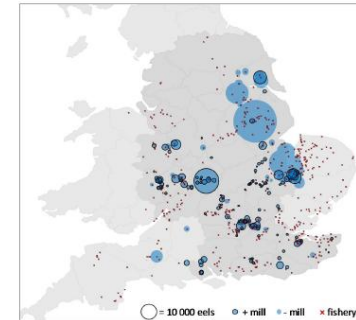




# A Great European Tradition



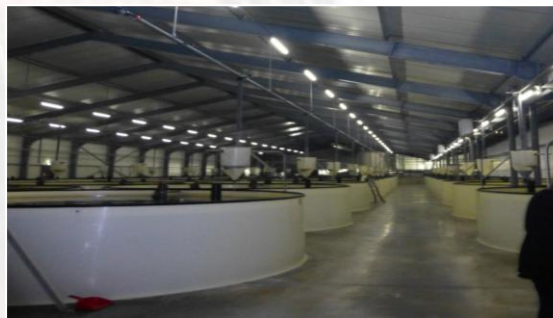
## Domesday book 1086



225 fisheries, tax 400 000 eels,  $\approx$  200 t  
+ 400 fisheries, tax in cash,  $\approx$  300 t  
Today: 39 t

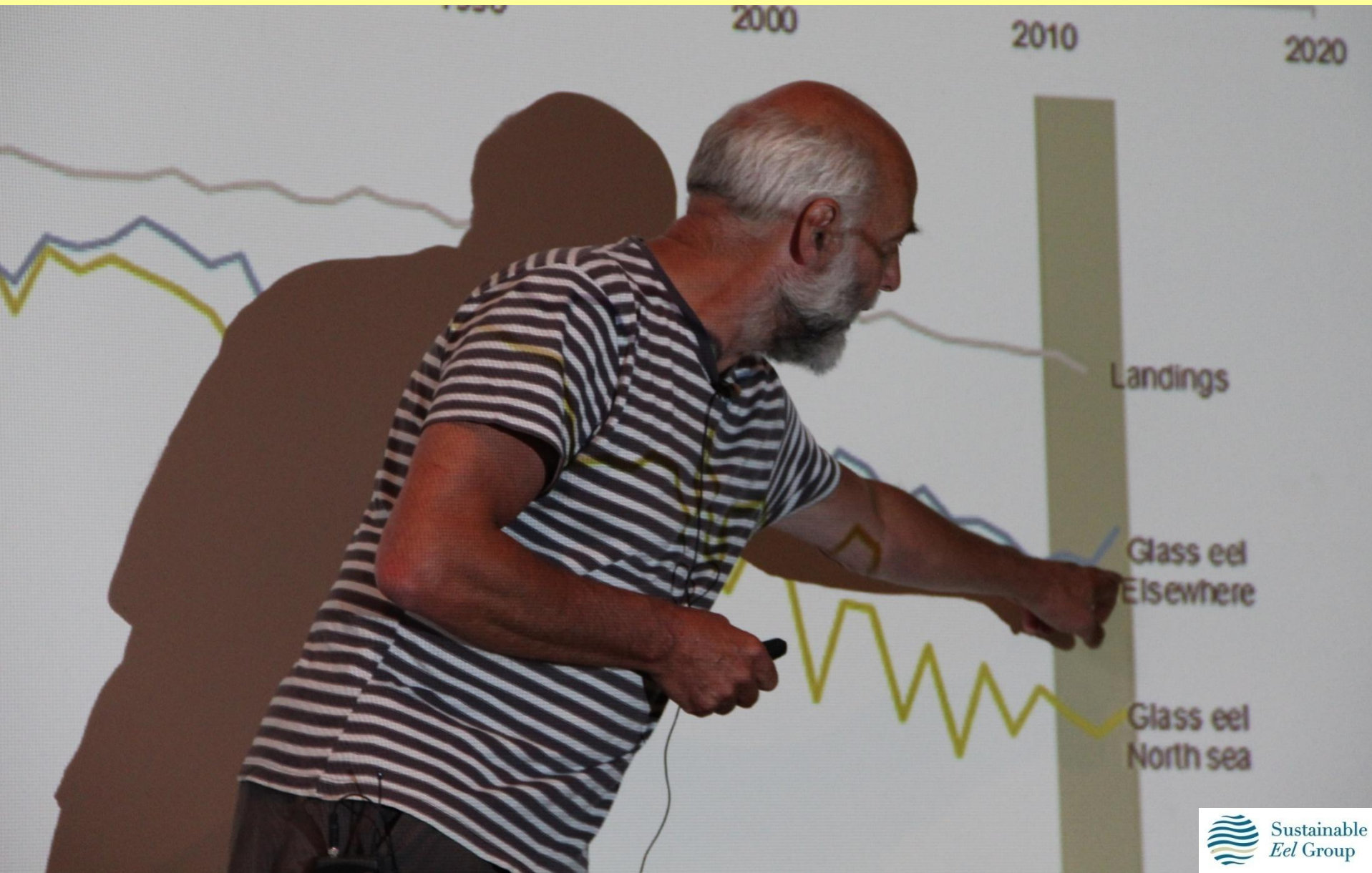


**13,000 Fishermen  
in 1993 (Moriarty)**





*“Without International Steering, nobody will protect the Eel”*





# Illegal trade threatens European eel recovery

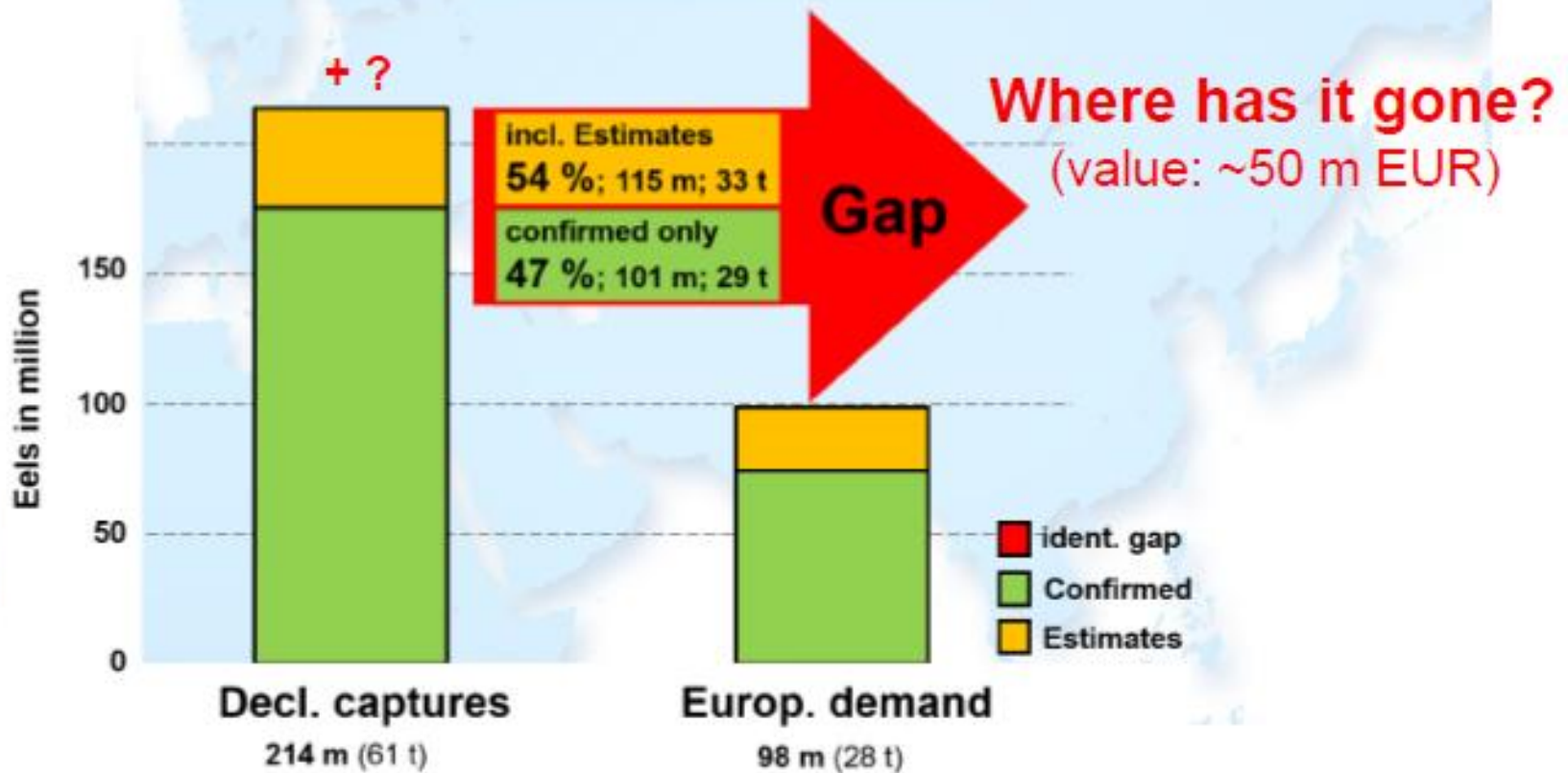
SEG Conference 2016  
31 May 2016 | London  
Florian Stein



Sustainable  
Eel Group



## Glass eel market survey *European glass eel market (2015/16)*



Clarity of estimates is expected in the coming month



SEG leaves you with this thought on intra EU Trading in eels

*If evidence exists showing that the systems in place do not operate such as to trace all live eel imports/exports, then 'prima facie' there is an infringement of Article 12 of the Regulation*



**The eel saga continues ..... A reformed fishery and industry's key allies are scientists, conservationists and all the champions for a natural world therefore**

***“The only way to a positive future for the eel, the fishery and the industry is through sustainability and proving it”***

Andrew Kerr SEG Chairman